

規格 Specification

產品型號 Model 濾水系統 AP2-405G	
過濾精密度 Micron Rating	0.5微米micron
有效過濾水量 Capacity	1,056加侖gallon (4,000公升liters)
流量 Flow Rate	0.5加侖/分鐘gpm (1.9公升/分鐘lpm)
適用水溫 Operating Temperature	4.4°C - 37.8°C
適用水壓 Operating Pressure	25-120psi
尺寸 Dimension	26.3cm(H) x 7.4cm(W) x 6.7cm(D) 需預留8cm以便更換濾芯 8cm distance reserved for cartridge change-out
濾芯 Cartridge	濾芯 AP2-C405G

使用須知：

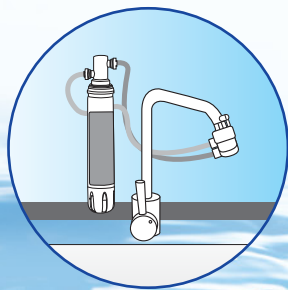
- 當水流速度減慢便應更換濾芯，建議每6至9個月更換濾芯一次，但視乎用水量及水質而異，濾芯最長亦可使用達12個月。
- 如懷疑水源受污染或未經任何消毒處理，請勿使用本產品。
- 安裝及使用前，請先閱讀安裝及操作指引以避免因漏水而導致的任何財物損失。
- 本產品只適用於家居冷水處理。
- 本公司並不承擔因保養失當而造成之產品故障。

Instructions:

- Change the cartridge when the water flow becomes slow. Suggest to change cartridge every 6 to 9 months. Cartridge life varies by water consumption and water quality but the maximum life is 12 months only.
- Do not use with water that is microbiologically unsafe or of unknown quality without adequate disinfection.
- To avoid property damage due to water leakage, please read the installation and operating manual before installing and using this product.
- For residential use only with cold water
- 3M will not be liable for any system failure due to improper maintenance.

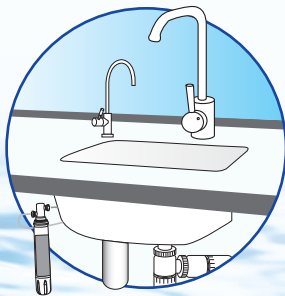
安裝方法 Installation Method

● 鉗盤面安裝 Above-the-sink Installation



在原有水龍頭直接安裝簡易分流器，免卻於鉗盤面開孔接駁獨立的水龍頭。
No hole drilling. Simply apply the designated adaptor to the drinking faucet.

● 鉗盤底安裝 Under-the-sink Installation



安裝獨立水龍頭，潔淨衛生，檯面格外整潔。
Space saving with dedicated drinking faucet. Look more concise.

LED獨立水龍頭Faucet-ID1 LED Single Faucet for Drinking Water

3M特別推出LED獨立水龍頭Faucet-ID1，備有濾芯更換提示功能，設計簡約時尚。

3M specially launched single drinking water faucet LED Faucet-ID1, with cartridge replacement reminder, simple and stylish.



Faucet-ID1

- 獨立水龍頭設計，過濾水更潔淨衛生
Dedicated drinking faucet, filtered water is clean concise.
- 獲 NSF/ANSI 61 之國際認證
NSF/ANSI Std. 61 Certified
- LED濾芯更換提示燈：正常使用時，藍燈閃動。當 LED 燈由藍燈轉紅燈時，即表示需盡快更換濾芯，同時必須更換新電池使正常操作。
LED Cartridge Replacement Reminder: The blue light flashes during normal operation. When it changed to red, please change both new filter cartridge and new battery to ensure normal operation.
- 水龍頭尺寸 Faucet Size：
26.3cm(H) x 6.2cm(W) x 6.9cm(D)



LED 濾芯更換提示燈
LED Cartridge Replacement Reminder



濾水系統
3M香港有限公司
香港屈臣道15號
維多利中心5字樓
電話: 2806 6111
www.3M.com/hk/waterfilter

特約分銷商
Authorized Distributor:



協昇集團有限公司
Alliance Ascent Holdings Ltd



AP2-405G家用濾水系統
Water Filter for your Home

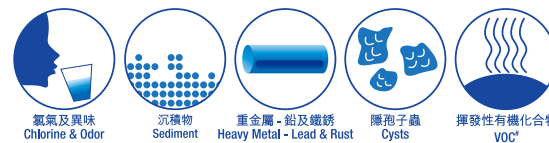


Cleaner Clearer Water



From the Fortune 500
由財富500強企業呈獻

有效過濾以下物質 Effectively filter the following components in water



*包括苯、二氯苯、毒殺芬
* Include Benzene, Dichlorobenzene, Toxaphene



濾水系統
AP2-405G

為何需要淨水設備？ Why need water purification?

即使我們把水煮沸，水中仍然存在很多肉眼看不見的有害物質，如化學品殘餘物、氯、鐵銹、異味等，危害家人用水健康。3M濾水系統技術可幫助我們解決以上問題，保障自己及家人健康。

Although we fully boil our drinking water, many invisible chemical residuals, chlorine, sediments, rust, lead, etc still exist and threaten our health. 3M Water Purification technology can help to improve our lives and protect our families' health.

安全飲用水標準 Drinking Water Standard

理想的飲用水



為何選擇3M淨水設備？ Why choose 3M Purification?

3M擁有過70年的高端淨水技術，於不同行業提供水質淨化方案，如電子微型零組件生產時使用之高純水、製藥業生產疫苗和注射劑之用水過濾、酒類生產的淨化程序過濾及跨國飲料商及大型連鎖餐廳之用水過濾。如此豐富的淨水經驗並擁有100項專利的核心技術，非一般過濾產品能匹敵。

With over 70 years evolving filtration technology, 3M Purification is providing the best in class filtration services to many market segments, ranging from the filtration for highly sensitive components in electronic manufacturers, pharmaceutical Companies for drug manufacturing, food and beverage manufacturer for beverages preparation and global chain restaurants for food preparation. With this innovative and highly reliable core filtration technology and numerous proprietary design, 3M Purification is recognized to be the most trusted brand in the industry.

3M淨水系統採用什麼技術？ What is the technology used by 3M?

3M AP2-405G 系統同時採用了漸進式粒子分離過濾技術及活性碳磚過濾技術來過濾水中雜質及有害物質。

3M AP2-405G Series use a combination of particles separation technology and carbon to help deliver cleaner, clearer and better tasting water.

活性碳磚技術 Pre-Activated Carbon Block

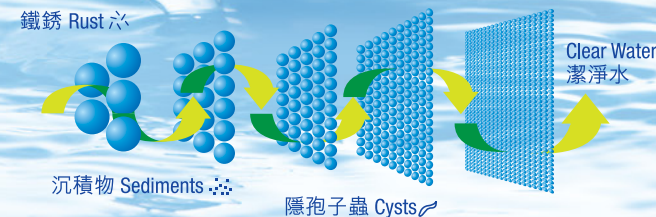
活性碳磚的吸附及依附技術，可減少水中的氯氣、異味、重金屬如鉛、水銀、揮發性有機物等有害物質。

Carbon block technology can reduce contaminant such as chlorine, taste & odor, heavy metal Lead, Mercury, VOC in water by absorption & adsorption.

漸進式粒子分離過濾技術 Progressive Particle Separation

漸進式粒子分離過濾技術過濾水中雜質及有害物質如隱孢子蟲。此精密過濾技術不單提升過濾效能，而且可縮小濾芯的體積，外觀更覺簡潔。

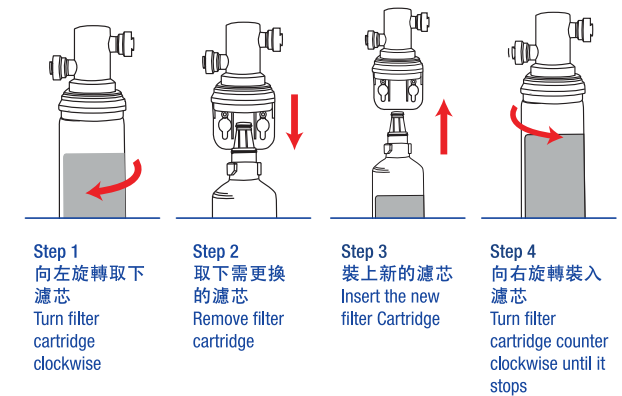
This process is used to progressively reduce the sediment and rust particles that are picked up from the water delivery system and to reduce parasitic cysts from the water.



快速濾芯更換設計 Sanitary Quick Change(SQC) Design

獨特快速濾芯更換設計，10秒可自行更換濾芯。

Patented SQC design, 10 seconds to change the cartridge.



AP2-405G家用濾水系統的獨特之處？ Why choose AP2-405G Water Filter?

- 採用先進技術，能有效過濾重金屬鉛及鐵銹、VOC揮發性有機化合物（如苯、二氯苯、毒殺芬）、氯氣、異味、隱孢子蟲及沉澱物。Advanced technology can effectively filter heavy metal lead and rust, VOC (include Benzene, Dichlorobenzene, Toxaphene), chlorine, taste & odor, cysts and sediments
- 3M根據NSF International美國國家衛生基金會第42及53標準進行測試，安全可靠。3M also tested in accordance with NSF Standard NO.42 and 53 to assure product safety and reliability
- 採用美國食物及藥物管理局(FDA)CFR-21認可之物料製造。Manufactured from U.S. Food and Drug Administration (FDA) CFR-21 compliant materials
- 先進技術令濾芯體積縮小，濾水量卻能達到4000公升。Advance technology achieves higher capacity, i.e. 4000L, in a smaller size
- 獨有特快濾芯更換設計，10秒即可自行更換妥當。With the patented SQC design, the cartridge can be changes in 10 seconds easily
- 外型特別纖巧，只有26.3cm高，適合狹小空間安裝。Smaller cartridge reduces height to only 26.3cm; better fit to modern housing environment

